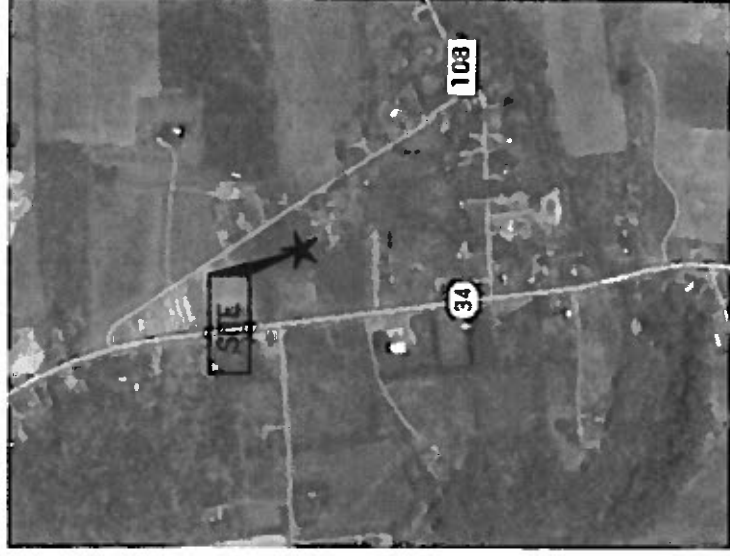
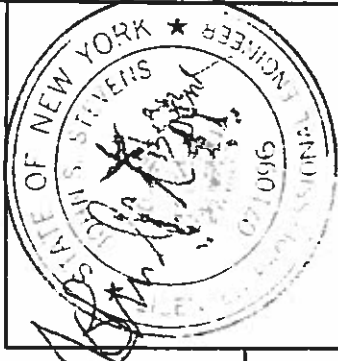
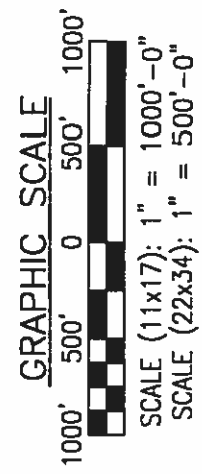


THE LOCATION, SIZE AND TYPE OF MATERIAL OF EXISTING UTILITIES INDICATED ON THE PLANS IS NOT REPRESENTED AS BEING ACCURATE. SUFFICIENT OR COMPLETE. IT SHALL BE THE CONTRACTOR'S RESPONSIBILITY TO DETERMINE THE ACTUAL LOCATION OF ALL SUCH UTILITIES, INCLUDING THE SERVICE CONNECTIONS TO UNDERGROUND UTILITIES. PRIOR TO CONSTRUCTION THE CONTRACTOR SHALL NOTIFY THE UTILITY COMPANIES & BUILDING MANAGEMENT OF HIS OPERATIONAL PLANS AND SHALL OBTAIN FROM THE RESPECTIVE UTILITY COMPANIES & BUILDING MANAGEMENT DETAILED INFORMATION AND ASSISTANCE RELATIVE TO THE LOCATION OF THEIR FACILITIES AND THE WORKING SCHEDULE OF THE COMPANIES FOR REMOVAL OR ADJUSTMENT WHERE REQUIRED. IN THE EVENT AN UNEXPECTED UTILITY INTERFERENCE IS ENCOUNTERED DURING CONSTRUCTION, THE CONTRACTOR SHALL IMMEDIATELY NOTIFY THE UTILITY COMPANY OF JURISDICTION, BUILDING MANAGEMENT, & THE ENGINEER.

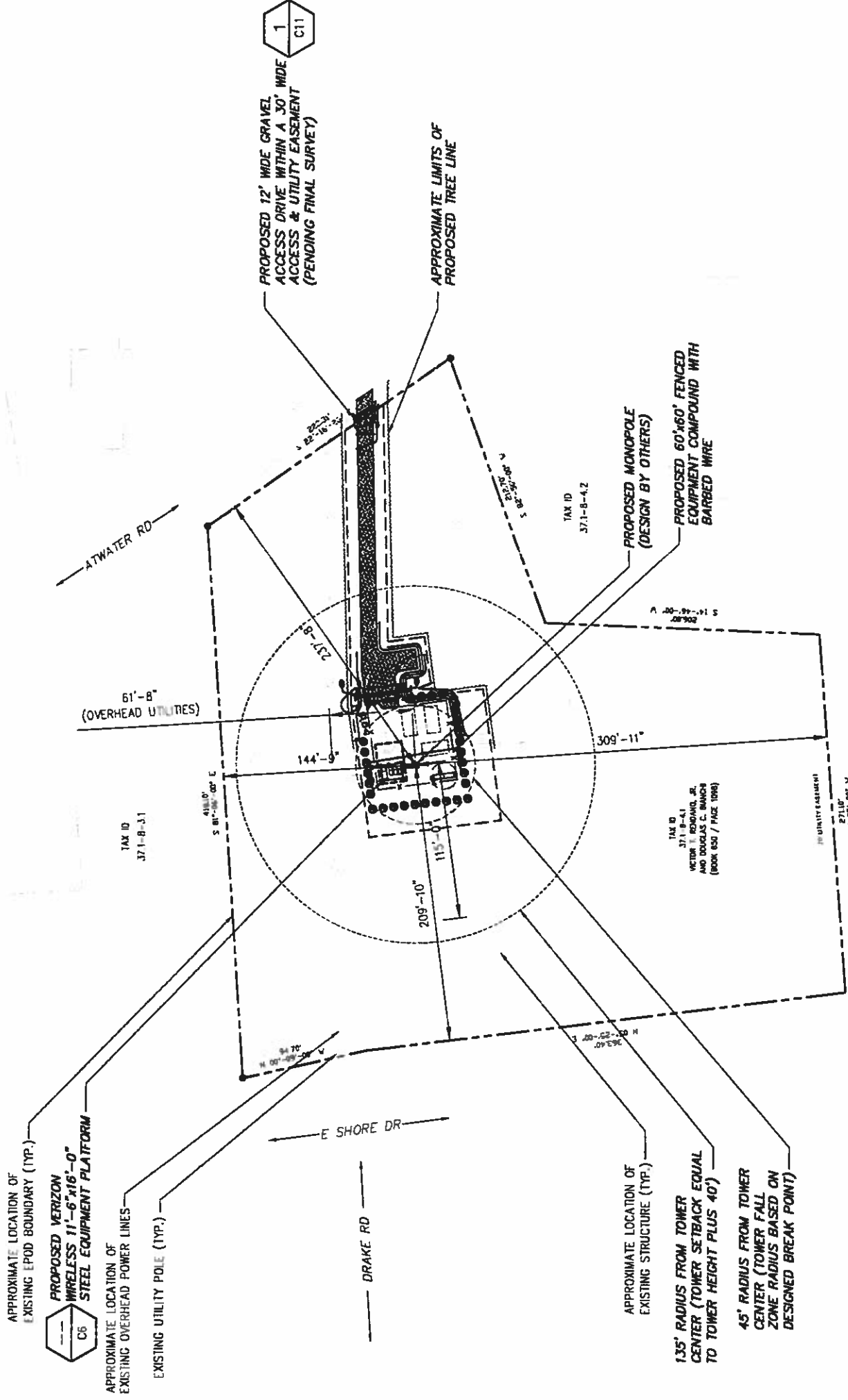
**NOTE:**  
ROAD SURFACE TO BE CENTERED IN ACCESS WAY AS TO NOT TAKE UP MORE THAN 60% OF ACCESS EASEMENT



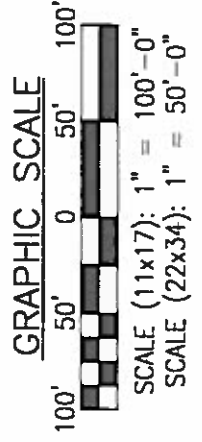
2 AERIAL VIEW  
SCALE: AS NOTED



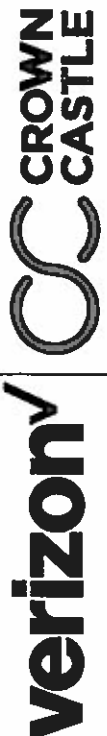
IT IS A VIOLATION OF LAW FOR ANY PERSON, UNLESS THEY ARE ACTING UNDER THE DIRECTION OF A LICENSED PROFESSIONAL ENGINEER, TO ALTER THIS DOCUMENT.



1 OVERALL SITE PLAN  
SCALE: AS NOTED



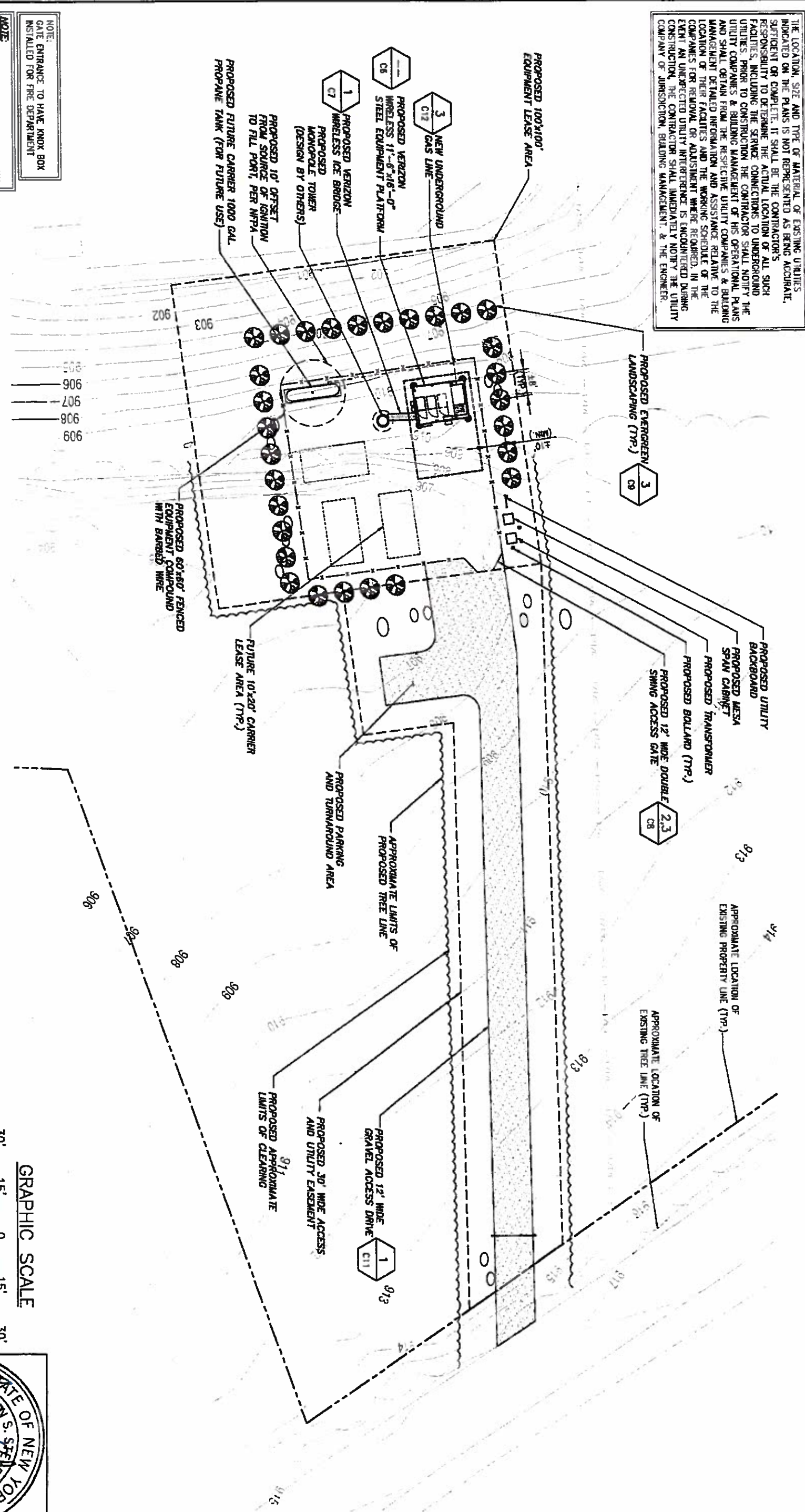
OVERALL SITE PLAN  
REACH RUN  
1901 E SHORE DR.  
LANSING, NY 14802



NO.	DATE	REVISIONS	BY	CHK	APP'D
11	11/15/17	ADD DIMENSIONS - C2B	MAP	ADD	ADD
10	10/19/17	ADD FALL ZONE	MAP	ADD	ADD
9	9/7/17	REVISED GRADING PLAN	MAP	ML	ADD
8	8/29/17	REVISED / ISSUED FOR PERMIT	MAP	ML	ADD
7	8/21/17	REVISED / ISSUED FOR PERMIT	MAP	ML	ADD

401-017

THE LOCATION, SIZE AND TYPE OF MATERIAL OF EXISTING UTILITIES INDICATED ON THE PLANS IS NOT REPRESENTED AS BEING ACCURATE, SUFFICIENT OR COMPLETE. IT SHALL BE THE CONTRACTOR'S RESPONSIBILITY TO DETERMINE THE ACTUAL LOCATION OF ALL SUCH FACILITIES, INCLUDING THE SERVICE CONNECTIONS TO UNDERGROUND UTILITIES. PRIOR TO CONSTRUCTION THE CONTRACTOR SHALL NOTIFY THE UTILITY COMPANIES & BUILDING MANAGEMENT OF HIS OPERATIONAL PLANS AND SHALL OBTAIN FROM THE RESPECTIVE UTILITY COMPANIES & BUILDING MANAGEMENT DETAINED INFORMATION AND ASSISTANCE RELATIVE TO THE LOCATION OF THEIR FACILITIES AND THE WORKING SCHEDULE OF THE COMPANIES FOR REMOVAL OR ADJUSTMENT WHERE REQUIRED. IN THE EVENT AN UNEXPECTED UTILITY INTERFERENCE IS ENCOUNTERED DURING CONSTRUCTION, THE CONTRACTOR SHALL IMMEDIATELY NOTIFY THE UTILITY COMPANY OF JURISDICTION, BUILDING MANAGEMENT & THE ENGINEER.

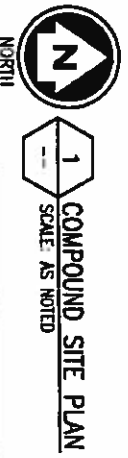


NOTE:  
GATE ENTRANCE TO HAVE KNOX BOX INSTALLED FOR FIRE DEPARTMENT

NOTE:  
MOTION ACTIVATED LIGHT TO TURN ON UPON ENTRANCE TO COMPOUND

NOTE:  
SECURITY ALARM SYSTEM LINKED TO VERIZON WIRELESS NOC, 24x7 MONITORING

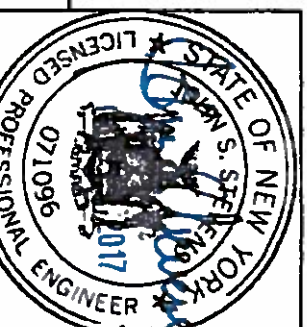
NO.	DATE	DESCRIPTION	BY	CHK.
10	10/14/17	ADD FULL ZONE	MAP	AM
9	1/7/17	REVISED GRADING PLAN	MAP	AM
8	6/29/17	REVISED / ISSUED FOR PERMIT	MAP	AM
7	6/21/17	REVISED / ISSUED FOR PERMIT	MAP	AM
6	6/15/17	REVISED / ISSUED FOR PERMIT	MAP	AM
5	6/15/17	REVISIONS	BY	CHK.



COMPOUND SITE PLAN

REACH RUN

1901 E SHORE DR.  
LAWSNG, NY 14882



IT IS A VIOLATION OF LAW FOR ANY PERSON, UNLESS THEY ARE ACTING UNDER THE DIRECTION OF A LICENSED PROFESSIONAL ENGINEER, TO ALTER THIS DOCUMENT.

INFINIGY8

CROWN CASTLE

401-017